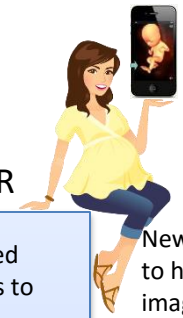
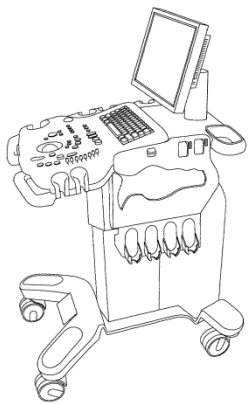


## BebeVue Process



Ultrasound study is captured and forwarded via DICOM send to AE Title: BEBEVU thru local network. This process is done during the prescribed ultrasound.



### BEBEVU CLIENT

DICOM study is received in DICOM fidelity.

Images from any SOP (standard Object Pair) Class that are associated with 'stills' or single frame images are denied. Images from any SOP class that is associated with multi-frame or cine clips is accepted.

Multi-frame images are down converted from DICOM to a lower integrity image format MP4.

The DICOM header is parsed to build an XML database tag with: Patient Name- Patient ID. No other patient data is transmitted.

3. Verify Server Certificate and cryptographic parameters.

### AWS SERVER

MP4 images are received with basic database tags to create image database.

Database is stored and secured by Amazon Web Services through Elastic Cloud Technology.

Mothers wishing to receive their cine clips register an account at [www.BebeVu.com](http://www.BebeVu.com) With their Name and Patient ID as the unique identifier.

Image file is automatically deleted after 30 days. User may choose to safely store image for longer.

6. Verify Client Certificate

New mother creates account to have non-diagnostic quality images for personal viewing and sharing. Images may be saved to devices such as smart phones and tablets.



BebeVue encourages the ethical code ALARA as well as meeting compliance guidelines set forth by HIPAA, ACOG and AIUM.

